

colorescience®  
BEAUTIFUL HEALTHY SKIN



# BEAUTIFUL HEALTHY SKIN

Originally crafted for vulnerable post-procedure skin, Colorescience® health-forward formulas have improved millions of lives by providing confidence and reassurance to women of all ages, skin types, and concerns.

Trusted, recommended, and personally used by thousands of physicians, our uncompromising products offer 365-day protection against UV rays and other environmental stressors.

Blendable and breathable, our line features custom-refined minerals and nutrient-rich ingredients—everything your skin needs to age well, nothing it doesn't.

Colorescience® sets the standard for beautiful, healthy skin care. Immediate radiance, lasting results—that's our commitment to you.

# OUR DIFFERENCE? JUST ADD WATER.

This simple test demonstrates the uncompromising quality of Colorescience® formulations. Imagine the water is your skin.



**COLORESCIENCE®  
FORMULATIONS**

- + PURE NATURAL MINERALS**  
Ideal for sensitive or breakout-prone skin types.
- + PHYSICAL PROTECTION**  
Scientifically proven levels of zinc oxide and titanium dioxide designed to reflect harmful rays from reaching your skin.
- + BREATHABLE BARRIER**  
Pure, water-resistant formulas form a protective barrier on skin, preventing moisture loss.

# OUR COMPETITION

Now, imagine *this* water is your skin.



**OTHER MAKEUP  
FORMULATIONS**

- **IMPURE INGREDIENTS**  
Can clog pores and harm the health of your skin.
- **CHEMICAL SUNSCREEN**  
Penetrates, filters and absorbs harmful rays into your skin.
- **CAKEY COVERAGE**  
Mass processed minerals muddy the water and sink to the bottom of the beaker. If this were your skin, they would clog your pores.

# UV PROTECTORS

Colorescience® UV Protectors deliver non-chemical sunscreen with defense from environmental stressors, infused with antioxidants. Gentle enough for every skin type, layered protection has never been this easy to apply and reapply throughout the day.





## SUNFORGETTABLE® BRUSH-ON SUNSCREEN SPF 50

Beauty begins with protected skin. Sunforgettable® Brush-on Sunscreen offers powerful SPF 50 UVA/UVB defense, alone or over makeup. Sheer, natural-looking finish—one simple, on-the-go application.



## SUNFORGETTABLE® BRUSH-ON SUNSCREEN SPF 30

Beauty begins with protected skin. Sunforgettable® Brush-on Sunscreen offers powerful SPF 30 UVA/UVB defense, alone or over makeup. Sheer, natural-looking finish; water-resistant SPF—one simple, on-the-go application.

# TREATMENTS

Each Colorescience® award-winning treatment was designed to target specific concerns of sensitivity and redness, pigmentation, and aging, providing immediate and long-term benefit for total skin health. Crafted with clinically-tested, proprietary formulas, each product is gentle on even the most sensitive skin types.







### **ALL CALM™** CLINICAL REDNESS CORRECTOR SPF 50\*

This 3-in-1 proprietary formula instantly neutralizes redness, helps soothe and calm sensitive skin, and provides SPF 50 protection while its patent pending BioSolace™ complex helps provide ongoing relief from sensitivity and the appearance of redness.

*\*Available early 2018*



### **EVEN UP®** CLINICAL PIGMENT PERFECTOR® SPF 50

Brighten, correct and protect your skin with Colorescience® Even Up Clinical Pigment Perfector®. It's patent pending LUMIRA® complex is clinically tested to diminish the appearance of discoloration and immediately blur stubborn brown spots, while zinc oxide and titanium dioxide deliver chemical-free UV and environmental protection.



### **ANTI-AGING SERUM** DECAPLEX 10® PEPTIDE COMPLEX

Ideal for all skin types, Colorescience® Anti-Aging Serum is a clinically tested treatment that features our Decaplex-10® peptide blend, hyaluronic acid, and cosmetic enhancing ingredients to diminish the look of wrinkles and rejuvenate your skin.

# SKIN PERFECTORS

Colorescience® award-winning, custom-created 3-in-1 face primers extend makeup wear, help diminish the look of fine lines and pores, while addressing specific skin concerns and providing color correction with targeted ingredients.

Recommended by the Skin Cancer Foundation for daily use, each Skin Perfector provides non-chemical broad spectrum UV and environmental protection.



## **BRONZING PERFECTOR SPF 20** 3-IN-1 FACE PRIMER

You're on vacation every day with Colorescience® Bronzing Perfector. Extended makeup wear and the instant sun-kissed tint you crave; while zinc oxide and titanium dioxide deliver chemical-free UV and environmental protection.



## **BRIGHTENING PERFECTOR SPF 20** 3-IN-1 FACE PRIMER

Brighten your complexion, remove dullness, and extend makeup wear; while zinc oxide and titanium dioxide deliver chemical-free UV and environmental protection. Colorescience® Brightening Perfector provides an illuminating boost for your skin in a whipped, soft yellow tint.

## **CALMING PERFECTOR SPF 20** 3-IN-1 FACE PRIMER

Soothe sensitive skin and extend makeup wear while zinc oxide and titanium dioxide deliver chemical-free UV and environmental protection. Colorescience® Calming Perfector provides daily confidence in a whipped, universal golden-nude shade.

## **MATTIFYING PERFECTOR SPF 20** 3-IN-1 FACE PRIMER

Control shine and blur imperfections of acne-prone skin while zinc oxide and titanium dioxide deliver chemical-free UV and environmental protection. Colorescience® Mattifying Perfector helps absorb oil and primes in a whipped, silky universal nude shade.

# FOUNDATIONS & CONCEALER

Colorescience® antioxidant- and vitamin-infused, broad spectrum SPF 20 & 30 foundations come in two finishes — liquid or pressed — and a considered shade selection that provides sheer to full coverage for porcelain to deep skin tones. Conceal and finish with Mineral Corrector Palette; featuring five skin-neutralizing shades – blendable to match any skin tone.



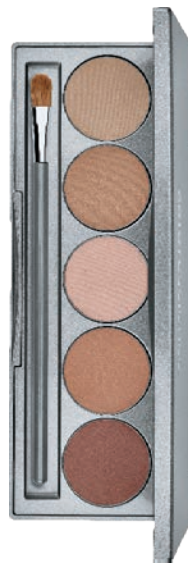
## **TINT DU SOLEIL™** WHIPPED FOUNDATION SPF 30

Nourish and even out complexion with Colorescience® Tint du Soleil™. Multi-vitamin complex, peptides, ceramides, and milk lipids improve the appearance of skin tone while the creamy, hydrating whipped formula feels like bare skin at its best. All while zinc oxide and titanium dioxide deliver chemical-free UV and environmental protection.



## **NATURAL FINISH PRESSED FOUNDATION** SPF 20

Forget you're wearing foundation with Colorescience® Natural Finish Pressed Foundation. A lightweight, hydrating, and protective formula that reveals your smoother, radiant complexion. Available in a range of shades suitable for a variety of skin tones.



## **MINERAL CORRECTOR PALETTE**

This versatile palette instantly corrects the look of imperfections. Complete with five shades to neutralize red, blue, and yellow tones, Mineral Corrector Palette provides long lasting, natural-looking coverage.

# ENHANCERS

Colorescience® Enhancers offer breathable, healthy radiance for eyes and face. Correct, conceal and highlight using natural, nutrient-infused mineral pigments.



## BEAUTY ON THE GO PALETTE

Create a gorgeous natural look with Colorescience® Beauty On The Go Palette. Featuring five shades that flatter all skin tones; this collection of rosy pinks and warm browns enhances face, eyes, lips and cheeks with ease.



### **MORNING GLOW ILLUMINATOR**

Enhance cheeks, brow bones, and the bridge of your nose with Colorescience® Morning Glow Illuminator. Instant, natural radiance.



### **CHAMPAGNE KISS ILLUMINATOR**

Brighten your complexion and diffuse imperfections with Colorescience® Champagne Kiss Illuminator. Light-reflective pigments provide sheer luminosity for stunning results.



### **SANTA FE BRONZER**

Create a sculpted, glowing complexion with Colorescience® Santa Fe Bronzer. Sun-kissed skin—whatever the season.

# ENHANCERS



## GEL EYELINER

Easy to apply, rich crème formula. Long-wearing Colorescience® Gel Eyeliner gives you intense pigment that won't smudge or fade.



## EYE & BROW PALETTE

Shape, define and highlight your brows while creating a timeless eye makeup look with Colorescience® Eye & Brow Palette. Featuring five versatile natural shades for effortless, beautiful eyes.





## HYDRATING MIST

Soothe skin, lock in makeup and revitalize your complexion throughout the day with moisture-rich Colorescience® Hydrating Mist.\*



## MASCARA

Colorescience® Mascara enhances the appearance of length and density, while a peptide blend helps nourish, condition, and prevent breakage.

# HOW TO BUILD YOUR COLORESCIENCE® REGIMEN

## 1 PREP

3-in-1 treatment products address underlying skin conditions:

- + **All Calm™**: For redness, rosacea, adult acne & sensitivity
- + **Even Up®**: For hyperpigmentation and brown spots
- + **Anti-aging Serum**: For fine lines and wrinkles

For those without significant skin concerns, our primers provide instant correction, mineral SPF protection, and help extend makeup wear:

- + **Brightening Perfector**: Brightens complexion and removes dullness
- + **Bronzing Perfector**: Instant radiance with a sun-kissed tint
- + **Calming Perfector**: Neutralize redness, soothe irritation
- + **Mattifying Perfector**: Control shine and blur imperfections

## 2 CORRECT

Colorescience® foundations come with broad spectrum SPF protection, two finishes, and a variety of shades to match all skin tones.

**Tint du Soleil™ SPF 30**: Whipped formula to nourish and even complexion. Perfect for normal to dry skin.

**Natural Finish Pressed Foundation SPF 20**: Lightweight, hydrating formula for a radiant complexion. Perfect for most skin types.

**Mineral Corrector Palette**: Use with any Colorescience® foundation to conceal, camouflage.

## 3 ENHANCE

Colorescience® Enhancers offer breathable, healthy radiance with nutrient-infused minerals.

**Face**: Use our illuminators and bronzer to create a luminous, sun-kissed look and Beauty On The Go Palette as a five-in-one tool for natural color.

**Eyes**: Use Eye & Brow Palette to shape, define and highlight for a classic look. Our rich, creamy eyeliner and peptide-powered mascara provide a dramatic, long-lasting look.

## 4

## PROTECT

At Colorescience®, we believe in layered SPF protection via 100% mineral, chemical-free active ingredients. Sun protection is our heritage and incorporated into nearly every product in our portfolio.

**Sunforgettable® Brush-on Sunscreen SPF 30/50:** Simple, mess-free, on-the-go application that works alone or over makeup. Sheer, natural-looking finish perfect for everyone in the family.



# DRY SKIN

**CONCERN:** DULL SKIN, TIRED SKIN,  
FINE LINES & WRINKLES

Restore radiance to dry skin. Nightly use of Anti-Aging Serum helps restore firmness and improves skin texture and clarity. Combat dullness by prepping with Brightening Perfector. Creamy, nutrient-infused Tint du Soleil™ hydrates skin while balancing complexion and providing additional SPF 30 protection. Refresh and revitalize skin throughout the day with moisture-rich Hydrating Mist. See our range of Enhancers to complete your look.



**ANTI-AGING SERUM**  
DECAPLEX 10® PEPTIDE COMPLEX

Clinically shown to improve:

- + Fine lines & wrinkles
- + Skin radiance & resiliency



## **BRIGHTENING PERFECTOR SPF 20** 3-IN-1 FACE PRIMER

- + Illuminates skin tone
- + Promotes healthy radiance
- + Water resistant (40 minutes)

## **TINT DU SOLEIL™** WHIPPED FOUNDATION SPF 30

- + Creamy and lightweight
- + Multi-vitamin infused
- + Water resistant (40 minutes)

## **HYDRATING MIST** MOISTURE-RICH HYDRATION

- + Soothes skin
- + Hydrates
- + Revives radiance

### **ALSO RECOMMENDED**

EVEN UP®; ALL CALM™; SUNFORGETTABLE® BRUSH-ON SUNSCREEN SPF 50

# PIGMENTATION

**CONCERN:** DARK SPOTS, DISCOLORATION,  
SUN DAMAGE, MELASMA, BLEMISHES

Brighten, correct pigmentation, and protect your skin from further UV damage with a curated set of targeted products. Prep and treat skin with Even Up® Clinical Pigment Perfector®. Its patent-pending LUMIRA® complex diminishes discoloration and blurs brown spots. Mineral Corrector Palette provides additional coverage to spot correct discoloration or blemishes. Refresh and revitalize skin throughout the day with moisture-rich Hydrating Mist. Protect skin from the sun's harmful UV rays with Sunforgettable Brush-on Sunscreen. See our range of Enhancers to complete your look.



## **EVEN UP®** CLINICAL PIGMENT PERFECTOR® SPF 50

- + Brightens with LUMIRA® ingredient complex
- + Improves appearance of discoloration
- + Water resistant (40 minutes)



## MINERAL CORRECTOR PALETTE

- + All-in-one color correcting pressed palette
- + Crème-like feel
- + Water resistant (80 minutes)



## SUNFORGETTABLE® BRUSH-ON SUNSCREEN SPF 50

- + Fights skin aging
- + Mess-free powder
- + Immediate on-the-go protection



## HYDRATING MIST MOISTURE-RICH HYDRATION

- + Soothes skin
- + Hydrates
- + Revives radiance

### ALSO RECOMMENDED

NATURAL FINISH PRESSED FOUNDATION SPF 20, TINT DU SOLEIL™ SPF 30

# REDNESS & SENSITIVITY

**CONCERN:** ROSACEA, ACNE-PRONE SKIN,  
POST-PROCEDURE SKIN

Instantly neutralize redness and soothe sensitivity associated with rosacea, acne, or post-procedure skin with a curated set of products. Prep and treat skin with All Calm™ Clinical Redness Corrector. Its patent-pending BioSolace™ complex helps soothe and calm sensitivity and provides ongoing relief from redness. Mineral Corrector Palette provides additional coverage with shades that lighten and correct red tones. Vitamin- and antioxidant-infused Natural Finish Pressed Foundation provides medium to full coverage. Protect skin from the sun's harmful UV rays with Sunforgettable® Brush-on Sunscreen. See our range of Enhancers to complete your look.



**ALL CALM™**  
CLINICAL REDNESS CORRECTOR SPF 50

- + Instantly neutralizes redness
- + Soothes sensitive skin





## MINERAL CORRECTOR PALETTE

- + All-in-one color correcting pressed palette
- + Crème-like feel
- + Water resistant (80 minutes)



## NATURAL FINISH PRESSED FOUNDATION SPF 20

- + Breathable formula
- + Vitamin & antioxidant infused
- + Buildable coverage



## SUNFORGETTABLE® BRUSH-ON SUNSCREEN SPF 50

- + Fights skin aging
- + Mess-free powder
- + Immediate on-the-go protection

### ALSO RECOMMENDED

TINT DU SOLEIL™ SPF 30; HYDRATING MIST

# OIL CONTROL

**CONCERN:** OILY, ACNE-PRONE SKIN; LARGE PORES

Reduce oiliness, shine, and the appearance of pores with a set of products curated for a look that lasts throughout the day. Prep skin with Mattifying Perfector to control and absorb shine and blur imperfections. Pressed Mineral Foundation offers lightweight, sheer to medium coverage and additional SPF protection. Mineral Corrector Palette provides coverage and concealment of blemishes and dark spots with skin-neutralizing shades. Protect skin from the sun's harmful UV rays with Sunforgettable® Brush-on Sunscreen. See our range of Enhancers to complete your look.



## **MATTIFYING PERFECTOR SPF 20** 3-IN-1 FACE PRIMER

- + Helps control oil and shine
- + Vitamin E and botanical extracts
- + Minimizes pore appearance



### MINERAL CORRECTOR PALETTE

- + All-in-one color correcting pressed palette
- + Crème-like feel
- + Water resistant (80 minutes)



### NATURAL FINISH PRESSED FOUNDATION SPF 20

- + Breathable formula
- + Vitamin & antioxidant infused
- + Buildable coverage



### HYDRATING MIST MOISTURE-RICH HYDRATION

- + Soothes skin
- + Hydrates
- + Revives radiance

### ALSO RECOMMENDED

SUNFORGETTABLE® BRUSH-ON SUNSCREEN SPF 50

# COMPLETE COLORESCIENCE COLLECTION AT A GLANCE

The Colorescience® collection is curated by skin type and concern so that your beauty can begin with healthy skin. Speak with your skin health professional, or visit [colorescience.com](http://colorescience.com) to learn more.



## TREATMENTS

(L-R) ALL CALM™, EVEN UP®, ANTI-AGING SERUM



## SKIN PERFECTORS

(L-R) BRONZING, BRIGHTENING, CALMING, MATTIFYING



## FOUNDATIONS & CONCEALERS

(L-R) LIQUID, PRESSED; MINERAL CORRECTOR PALETTE



## UV PROTECTORS

(L-R) SUNFORGETTABLE® BRUSH-ON SUNSCREEN SPF 50 & 30



## ENHANCERS

(L-R) BEAUTY ON THE GO PALETTE, MORNING GLOW ILLUMINATOR, CHAMPAGNE KISS ILLUMINATOR, SANTA FE BRONZER



## ENHANCERS (CONT.)

(L-R) GEL EYELINER, EYE & BROW PALETTE, HYDRATING MIST, MASCARA





[clarionmedical.com](http://clarionmedical.com)

[colorescience.com](http://colorescience.com)

[f](#) [in](#) [@](#) [👤](#) [🐦](#) [#colorescience](#)